

# G70 Installation Steps

**Step 1: Allocate the 3 screws, 1 mounting knob and 1 thermal pad in a ziplock plastic bag**



**Step 2: Ready your M.2 SSD, secure the M.2 SSD using the mounting knob**



**Step 3: Carefully insert the M.2 SSD into the slot**



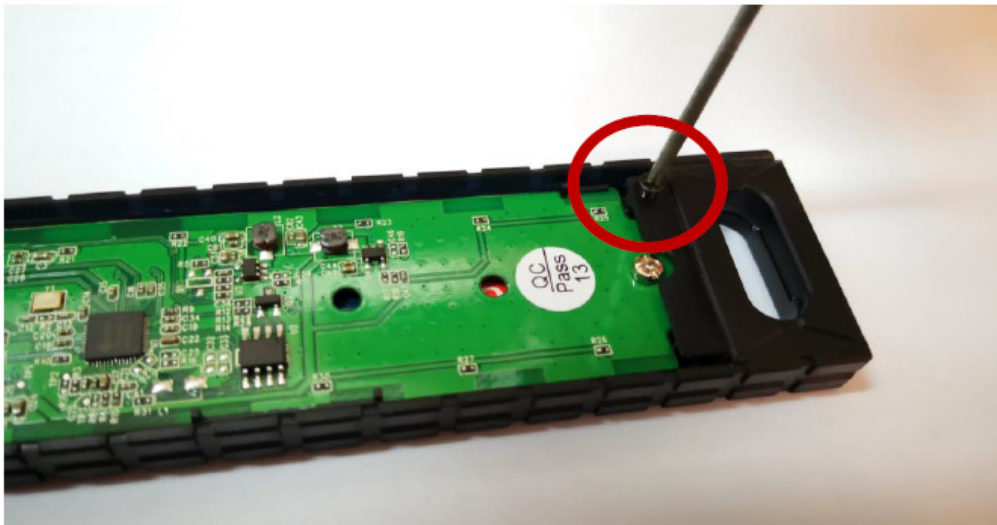
**Step 4: Paste the thermal pad onto the M.2 SSD, remember to remove the liner later**



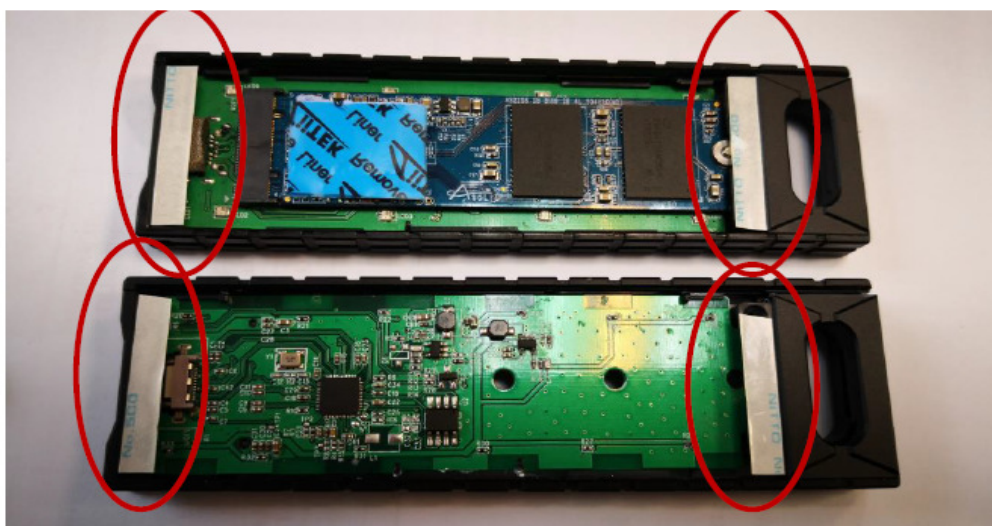
**Step 5: Secure the screw at the back of the the case**



**Step 6: Screw 2 black screws at the front and back of the case**

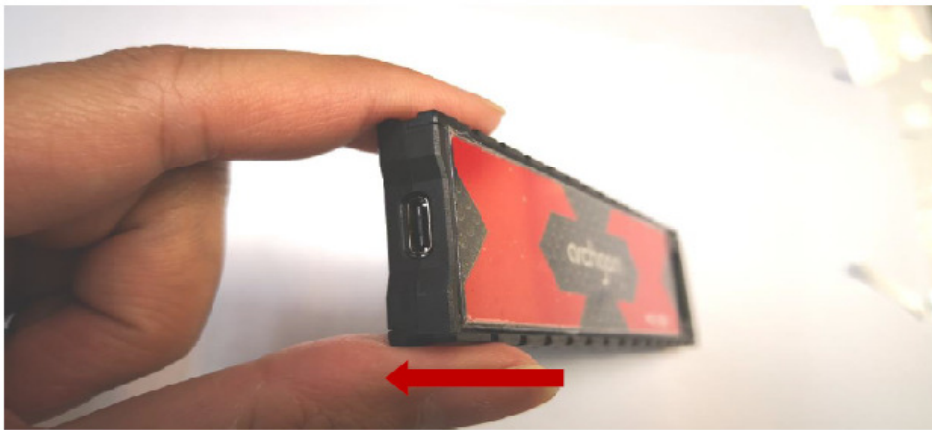
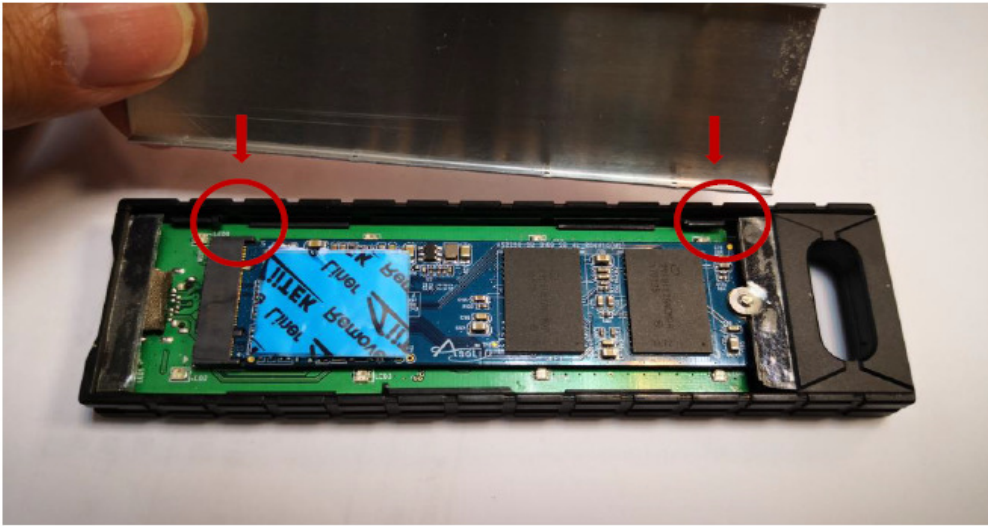


**Step 7: All double-sided tapes positions as shown, remove the liner**





**Step 8: Place the upper and lower cases, adhesive and secure from open**



**That's it! You're done! Your new Portable SSD is installed**

